



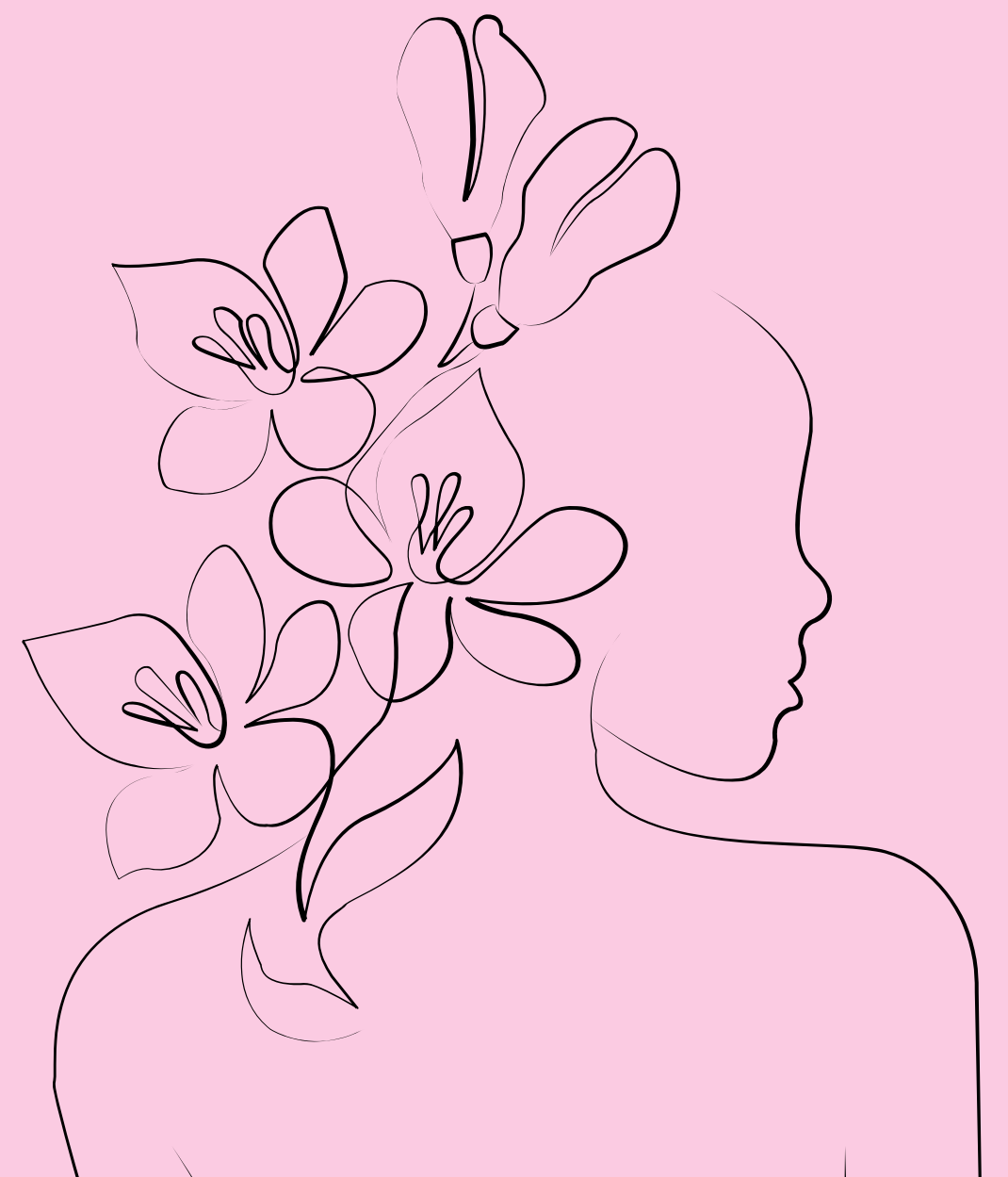
FAMILY PRESERVATION & POST MAJORITY

PIMOSAY MASHKODE *Bizhiki*

**JOIN US EVERY THURSDAY
FROM 10:00 AM - 2:00 PM
2ND FLOOR, 470 NOTRE DAME AVE**

LUNCH, TRANSPORTATION & CHILD MINDING PROVIDED!

**OUR SOUTHEAST WOMEN'S
WELLNESS GROUP IS ROOTED IN
ANISHINAABE TEACHINGS THAT
ALIGN WITH THE SEASONS AND
MOONS, TO SUPPORT WOMENS
SPIRITUAL, EMOTIONAL, MENTAL,
AND PHYSICAL WELLNESS.**



**TO REGISTER EMAIL US AT
FAMILY.PRESERVATION@SECFS.CA**